

Inserts

General turning

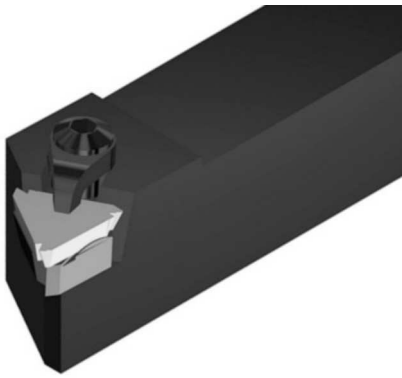
Aluminium wheel turning

Automatic lathes

Ceramic tools

Parting and grooving

Threading

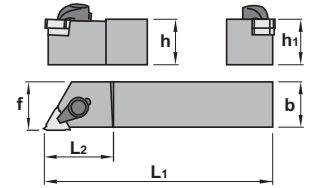
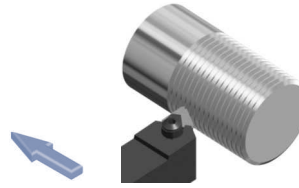


### Characteristics:

Toolholder for flat positive inserts.  
The insert is positioned with a 0° cutting angle, and a 0° clearance angle.

### Applications:

Threading toolholder.



## CXAP 90°

Ref.		h=h <sub>1</sub>	b	L <sub>1</sub>	L <sub>2</sub>	f	Insert size	Kg
CXAP R/L 2016 K16	CXAP R/L 2016 K16	20	16	125	22	17	R/L 166-3..	0,300
	CXAP R/L 2020 K16	20	20	125	28	21	R/L 166-3..	0,400
	CXAP R/L 2525 M16	25	25	150	28	26	R/L 166-3..	0,700
	CXAP R/L 3225 P16	32	25	170	28	26	R/L 166-3..	1,050
	CXAP R/L 3232 P16	32	32	170	28	33	R/L 166-3..	1,300
	CXAP R/L 2525 M22	25	25	150	34	26	R/L 166-4..	0,700
CXAP R/L 3225 P22	CXAP R/L 3225 P22	32	25	170	34	26	R/L 166-4..	1,050
	CXAP R/L 3232 P22	32	32	170	34	33	R/L 166-4..	1,300

Ref.							
CXAP R/L 2016 K16	CXAP R/L 2016 K16	2209	5003	3126 R/L	4012	2409	9216 - 9316
	CXAP R/L 2020 K16	2209	5003	3126 R/L	4012	2409	9216 - 9316
	CXAP R/L 2525 M16	2209	5003	3126 R/L	4012	2409	9216 - 9316
	CXAP R/L 3225 P16	2209	5003	3126 R/L	4012	2409	9216 - 9316
	CXAP R/L 3232 P16	2209	5003	3126 R/L	4012	2409	9216 - 9316
CXAP R/L 2525 M22	CXAP R/L 2525 M22	2211	5004	3132 R/L	4012	2411	9222 - 9322
	CXAP R/L 3225 P22	2211	5004	3132 R/L	4012	2411	9222 - 9322
	CXAP R/L 3232 P22	2211	5004	3132 R/L	4012	2411	9222 - 9322

Supplementary accessories

		R/L 166	l	s	d	Positive triangular inserts for threading
	Ref.	R/L 166-3..	16,50	3,18	9,52	
		R/L 166-4..	22,00	4,76	12,70	
For more information see page: H.11						
	R/L 166					